

Rectangular Folded Cross



Folded: 6"W x 4-1/4"H

Unfolded: 18"W x 12-3/4"H

Mailing: Letter rate

- Selfmailer: Eligible for auto rates with address placement on either cover, with the folded edge on the right and two tabs (see diagram)
- In envelope: A6 size, auto rates apply

Selfmailer Tab Locations:

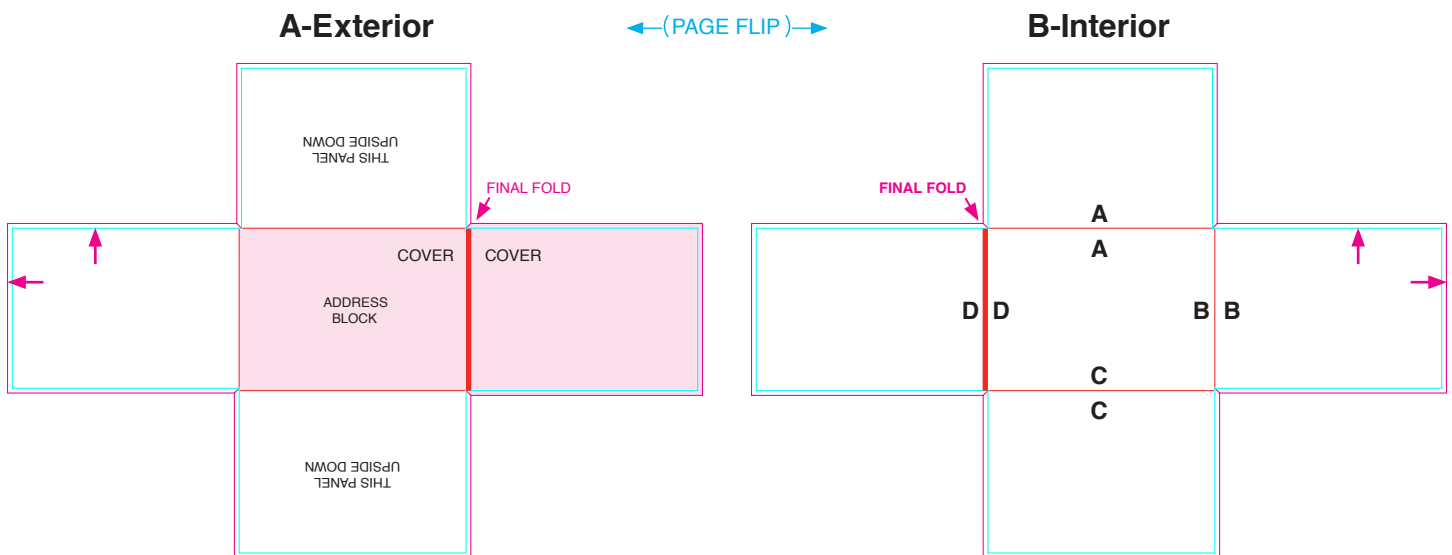


Dieline: It is recommended that the dieline files be imported into a professional page layout application, with one page for the A-Exterior dieline file and another for the B-Interior. Smartpress accepts print-ready PDFs with full bleeds (see below).

Folding: Folding instructions are given below on the interior diagram. AIA is the first fold, BIB is the second, etc.

Bleeds: All backgrounds, images and other page elements that print to the edge of the piece must extend past the dieline by 1/8". These "bleeds" will be trimmed off during finishing. The diagrams below represent the finished edges as the blue line and the bleeds as the magenta line.

Customization: Altering the dieline in any way will result in additional charges. A quote for customizations, such as additional die cutting, may be requested at: <https://smartpress.com/pages/custom-quote>



Cover panels

Final trim line

Bleed line