

EXTERIOR

MAILING AREA

A A

FINAL FOLD →

FOLD BY

foldfactory.com



SMARTPRESS

SLEEVE MAILER

Folded Size: 9"W x 6"H | Flat Size: 18.06"W x 7.5"H

COVER

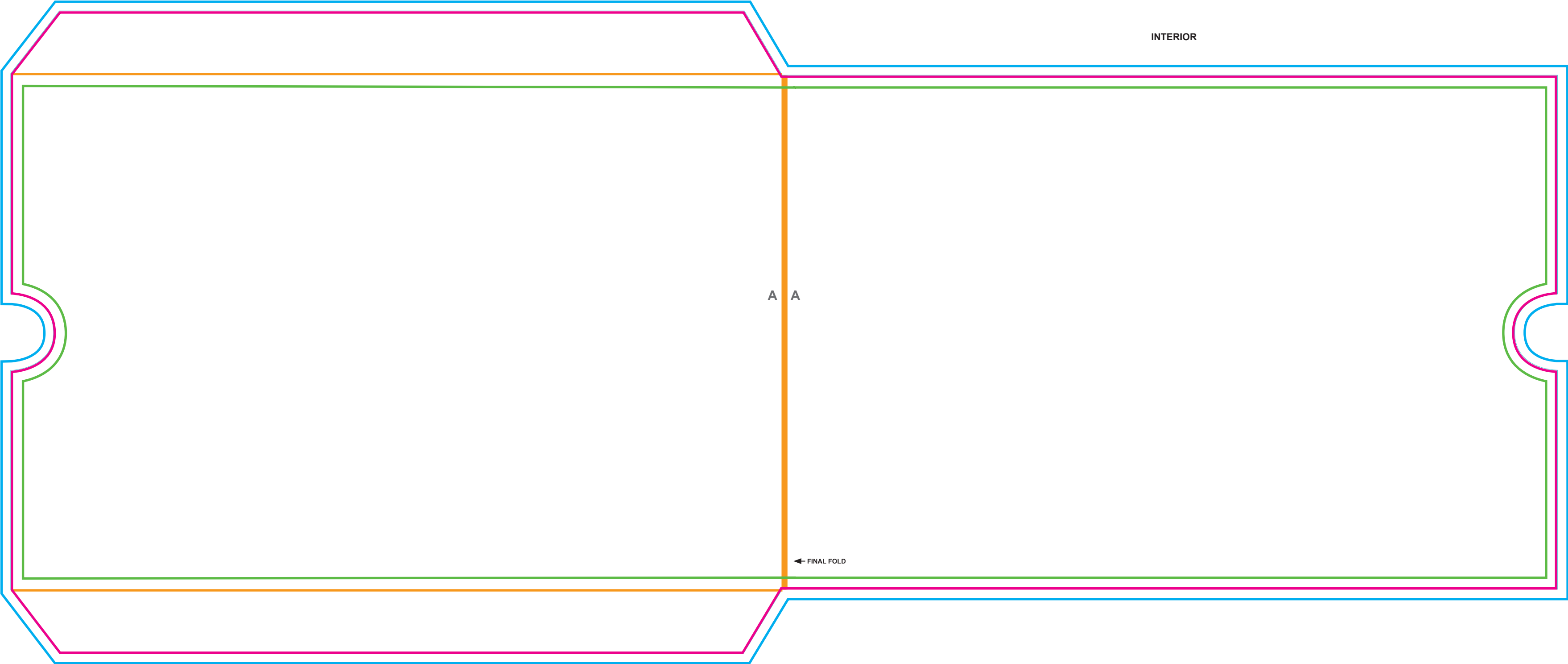
BLEED: Your file needs to include a 0.125" bleed necessary for production. Bleed is printing that goes beyond the edge of the sheet after trimming. If a bleed is not included in document setup, there is a good chance there will be a gap between the edge of the printed area and the cut line. This happens because there is a tolerance when cutting the printed piece. For more information on the importance of bleed, visit our website: support.smartpress.com/print-file-preparation/bleeds-borders

CUT LINE (FINISHED SIZE): This is where your artwork will be trimmed.

SAFE MARGIN: Your file needs to include a 0.125" safe margin necessary for production. Safe margin is the area around the edge of the sheet. If the safe margin is not included in document setup, there is a chance that the art close to the edge will get cut off, due to machine shift during cutting. This happens because there is a tolerance when cutting the printed piece. For more information on Cutting Tolerance, visit our website: support.smartpress.com/print-file-preparation/cutting-tolerance

FOLDS: The orange lines indicate where the folds will be. Follow the folds in alphabetical order (e.g., A|A is the first fold, B|B is the second fold, etc).

MAILING AREA: This area includes the barcode and address. The Intelligent Mail barcode is about 2.625" and can be included in the address block if there is at least 3.5" of horizontal space available in the address area. Please account for at least 3.5" x 1.75" for the address.



INTERIOR

A A

← FINAL FOLD