

Folded: 6"W x 6"L

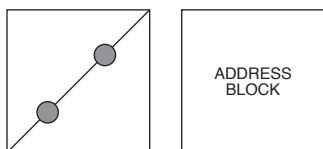
Unfolded: 17"W x 8-1/2"H

Mailing: Letter rate, non-machinable

- **In polybag:** Flat rates size
- **Letter size:** Non-machineable
- **Flat size:** Auto rates

Paper recommendation: 100# Text

Selfmailer Tab Locations:



Dieline: It is recommended that the dieline files be imported into a professional page layout application, with one page for the A-Exterior dieline file and another for the B-Interior. Smartpress accepts print-ready PDFs with full bleeds (see below).

Folding: Folding instructions are given below on the interior diagram. AIA is the first fold, BIB is the second, etc.

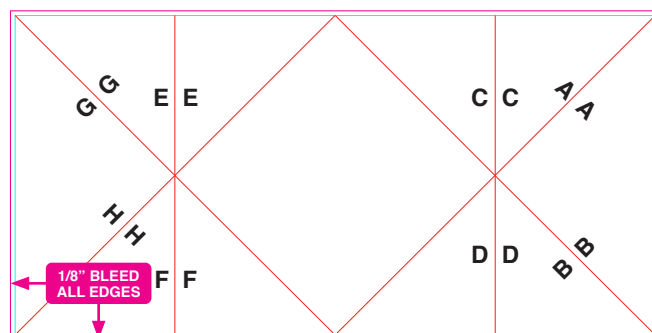
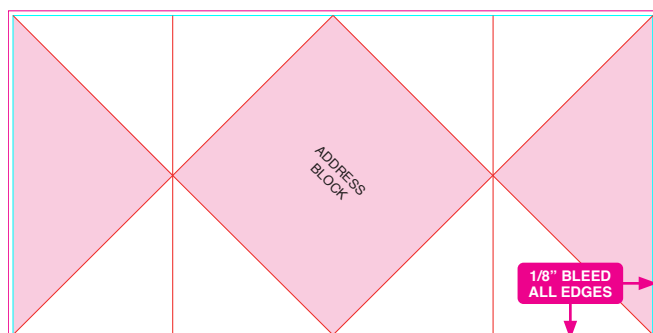
Bleeds: All backgrounds, images and other page elements that print to the edge of the piece must extend past the dieline by 1/8". These "bleeds" will be trimmed off during finishing. The diagrams below represent the finished edges as the blue line and the bleeds as the magenta line.

Customization: Altering the dieline in any way will result in additional charges. A quote for customizations, such as additional die cutting, may be requested at: <https://smartpress.com/pages/custom-quote>

A-Exterior

←(PAGE FLIP)→

B-Interior



 Cover panels

 Final trim line

 Bleed line