

Twist

Folded: 6"W x 6"H

Unfolded: 12"W x 12"H

Mailing: Machinable in a white paper envelope or polybag

•**In envelope:** Fits in a standard
6-1/2" square envelope

Paper recommendation: 100# Text

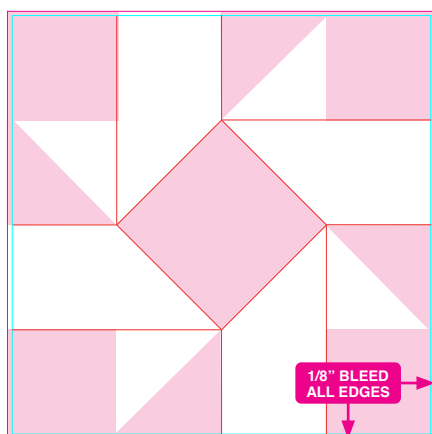
Dieline: It is recommended that the dieline files be imported into a professional page layout application, with one page for the A-Exterior dieline file and another for the B-Interior. Smartpress accepts print-ready PDFs with full bleeds (see below).

Folding: Folding instructions are given below on the interior diagram. A1A is the first fold, B1B is the second, etc.

Bleeds: All backgrounds, images and other page elements that print to the edge of the piece must extend past the dieline by 1/8". These "bleeds" will be trimmed off during finishing. The diagrams below represent the finished edges as the blue line and the bleeds as the magenta line.

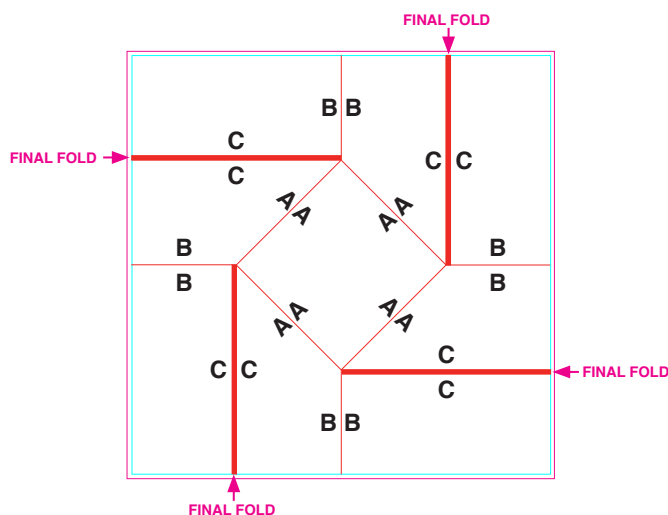
Customization: Altering the dieline in any way will result in additional charges. A quote for customizations, such as additional die cutting, may be requested at: <https://smartpress.com/pages/custom-quote>

A-Exterior



←(PAGE FLIP)→

B-Interior



■ Cover panels

■ Final trim line

■ Bleed line